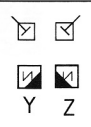
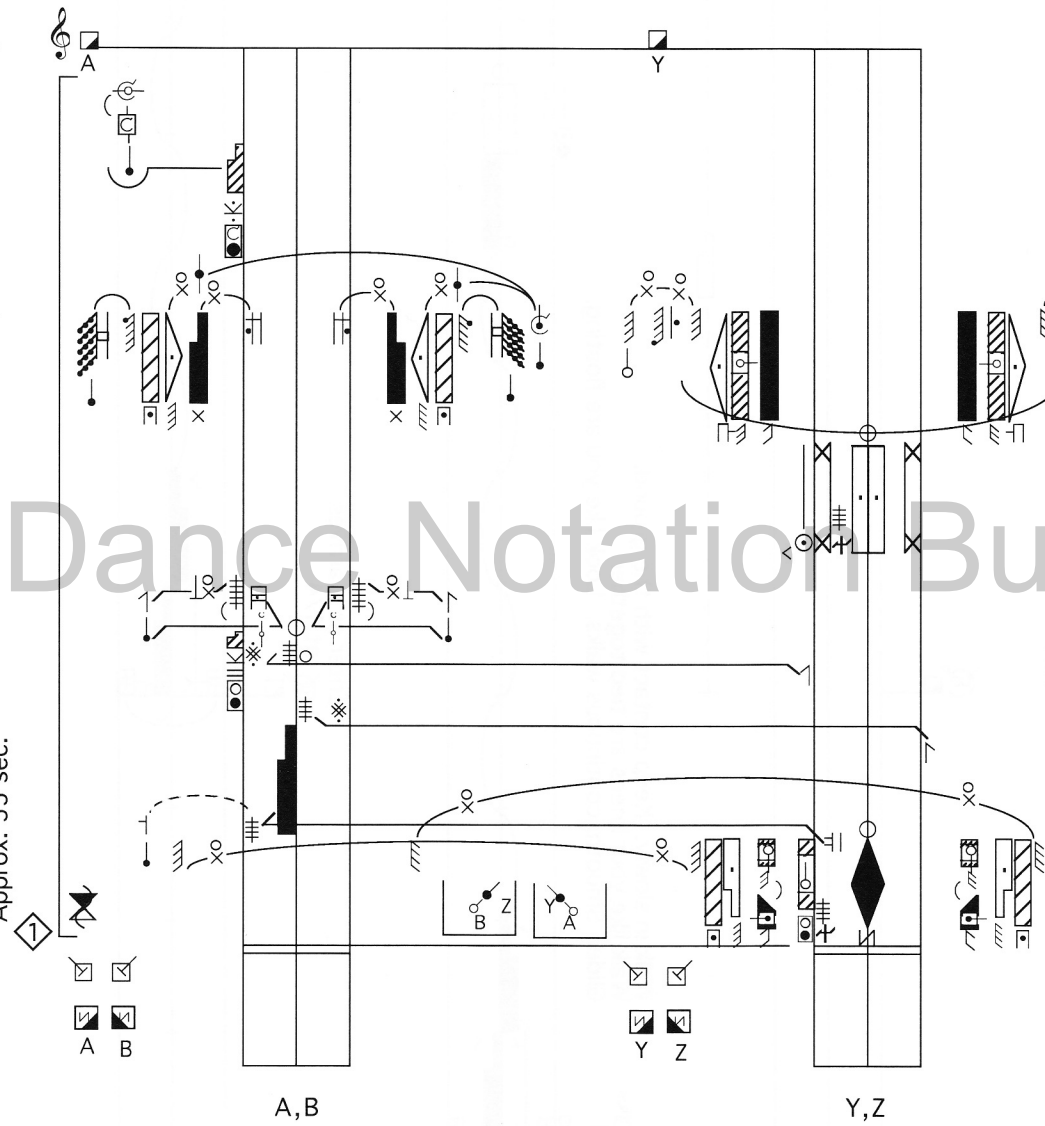


Mold to his head. Like a headress on top of the man. She should drop her head as much as possible.

If necessary, adjust feet to finish as shown.

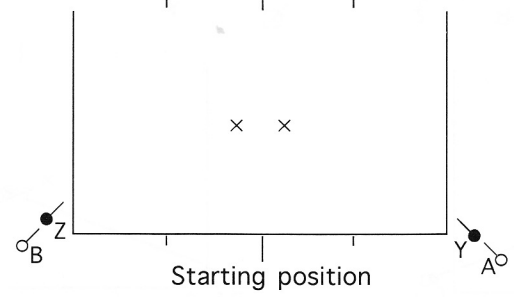
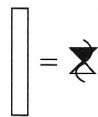
Get into position offstage as music plays. Approx. 55 sec.



A, B

Y, Z

Curtain rises, music starts, then lights fade in



Starting position

To stay on the man's shoulders, the woman must:

1. Grip with her toes. She should be like a parrot on his shoulder.
2. Place her feet exactly as indicated, the arch is on top of his shoulder, the toes are in front.
3. Press her arms against her own legs from the outside.
4. Press slightly with her legs on his head; however she should be careful not to put too much weight on his head.
5. Hold under his chin with her hands.
6. Mold to his head without putting weight on it and pushing it forward.

The man must be careful he does not arch his back. If the woman starts to fall backward, he should tilt his head forward slightly to bring her back into balance.

See important note in "Stage Marks" page x for placement of X's.