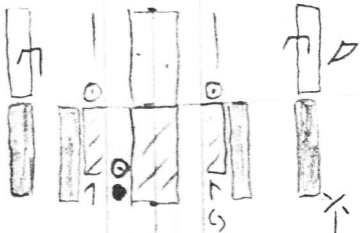


39

RELAYED TO SET



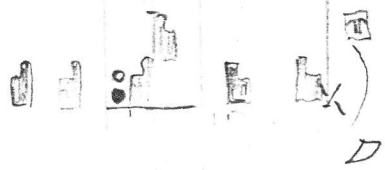
38

SEE FLOOR PLAN



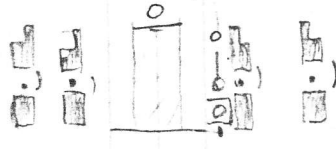
37

LIGHTS DOWN THE ROAD. GENTLY STEER CRUTCHES.



40

36



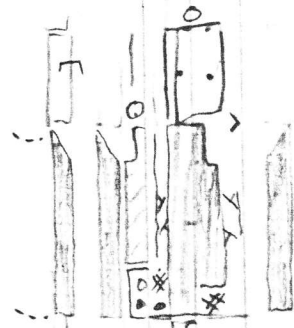
ALL

39

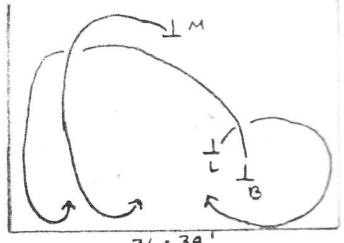
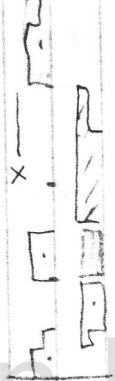


43

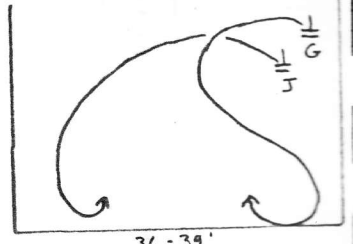
SOFT LIKE A DOUBLE



42



OPTION IF STAGE IS DEEP

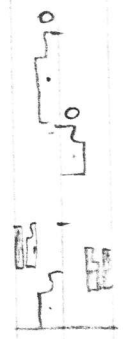


41

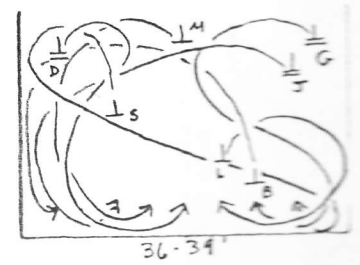
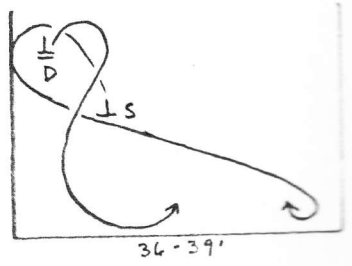
44

40

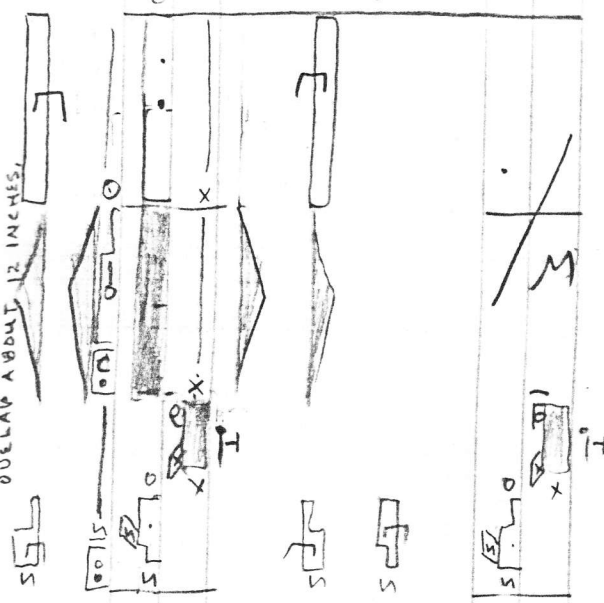
CRISP-LIGHT



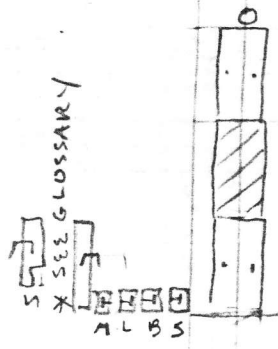
ALL



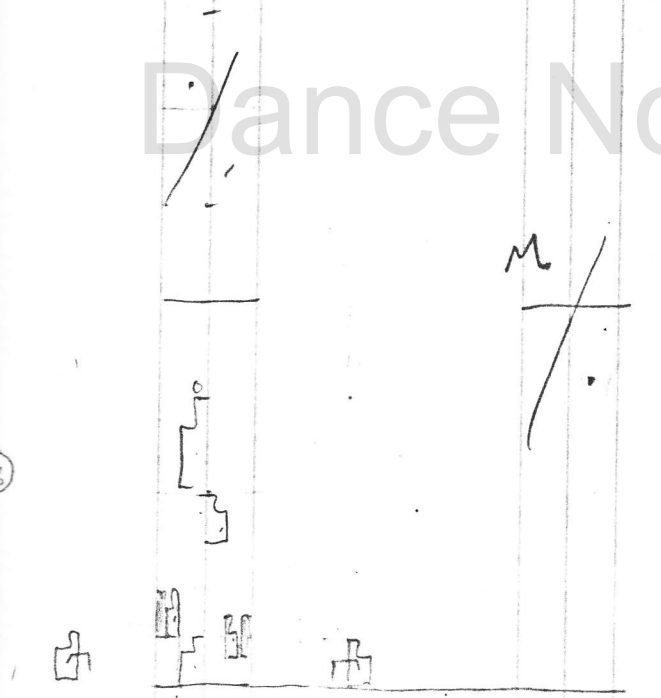
TRIANGULAR SHAPE
SEE GLOSSARY - CRUTCH TIPS SHOULD
OVERLAP ABOUT 1/2 INCHES.



SEE GLOSSARY



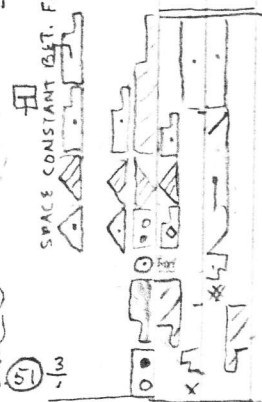
Dance Notation Bureau



SPACE CONSTANT BET. FOOT & CRUTCH

51

(50)
(49)
48 (51) 3



CHEAT ON AMOUNT OF TURN AND PLACEMENT OF
CRUTCHES TO ACHIEVE FLOOR PATTERN

LEFT CRUTCH TIP

MLBS DGJ

MLBS

DGJ

